

# Quick Reference

S3 MagicView is a powerful and user-friendly content management software for designing, distributing and displaying of digital signage.

Let's get started.

A quick checklist table to get your S3 MagicView installed.

Installation Component	Installed on
1. MySQL Server	Server computer
2. MySQL Connector ODBC	Server computer
3. S3MagicView Media Server	Server computer
4. S3MagicView Controller Server	Server computer
5. S3 MagicView Controller	Controller computer
6. S3 MagicView Client	Client computer
7. Adobe Flash Player 11	Controller and Client
8. Microsoft PowerPoint Viewer	Controller and Client

S3 MagicView Media Server, Controller Server, Controller, and Clients can be installed on different computers connected to the same network.

## Server installation

1. Insert the software CD in the CD-ROM of Server computer.
2. Select English language after the installation window pops up.



3. Click MagicView to install the software.



4. Install the MySQL, MySQL Connector, S3 MagicView Controller Server, and Media Server on the server machine.



## Controller installation

1. Insert the software CD in the CD-ROM of Controller computer.
2. Select English language after the installation window pops
3. Click MagicView to install the software.
4. Install Controller on the Controller machine.
5. Click Back to return to main menu. Select Utilities to install prerequisite software
6. Install Adobe Flash Player, Microsoft PowerPoint Viewer, and Video Filters on the Controller machine.

**Note:** Please launch Microsoft PowerPoint Viewer for at least one time before you use it to play PPT files with S3 Magic-View, so that the PPT viewer can be initialized.



## Client installation

1. Insert the software CD in the CD-ROM of Client computer.
2. Select English language after the installation window pops
3. Click MagicView to install the software.
4. Install Client on the Client machine.
5. Click Back to return to main menu. Select Utilities to install prerequisite software
6. Install Adobe Flash Player, Microsoft PowerPoint Viewer, and Video Filters on the Client machines.

**Note:** Please launch Microsoft PowerPoint Viewer for at least one time before you use it to play PPT files with S3 Magic-View, so that the PPT viewer can be initialized.



**For detail installation and configuration steps for S3 MagicView software, please refer to Chapter2 Installation in the User manual.**

Congratulations! You complete the installation and configuration of S3 MagicView software. Let's get to use the software.

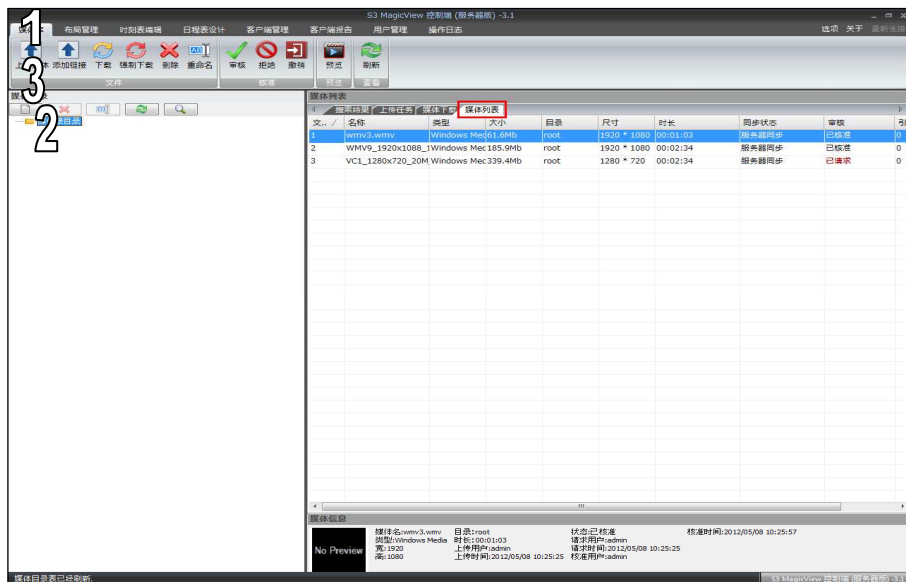
## Log in Controller

Log into the Controller on **Controller computer** by entering the existing user account and password\*.

**Note:** \* The initial account and password are admin.

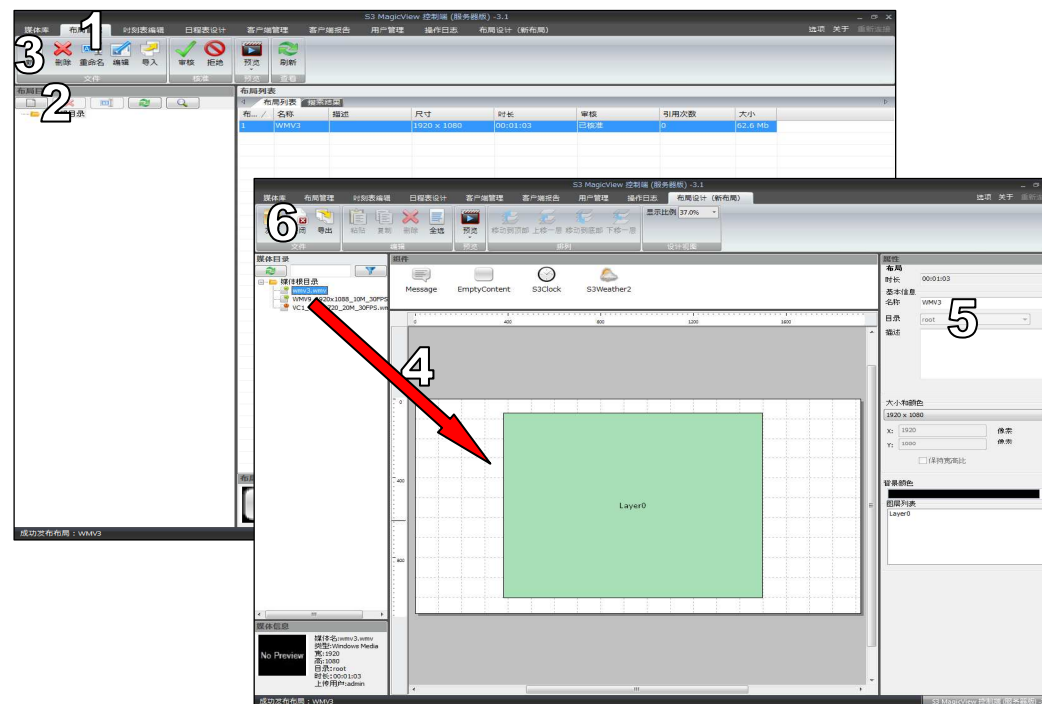
## Upload contents

1. Click the **Media Library** tab.
2. Click the **Create New Category** button in the **Media Library Category Tree** to create a new category.
3. Select the **Add Media** button on the menu bar.
4. Select the file to upload in the pop-up window and click the **Open** button.



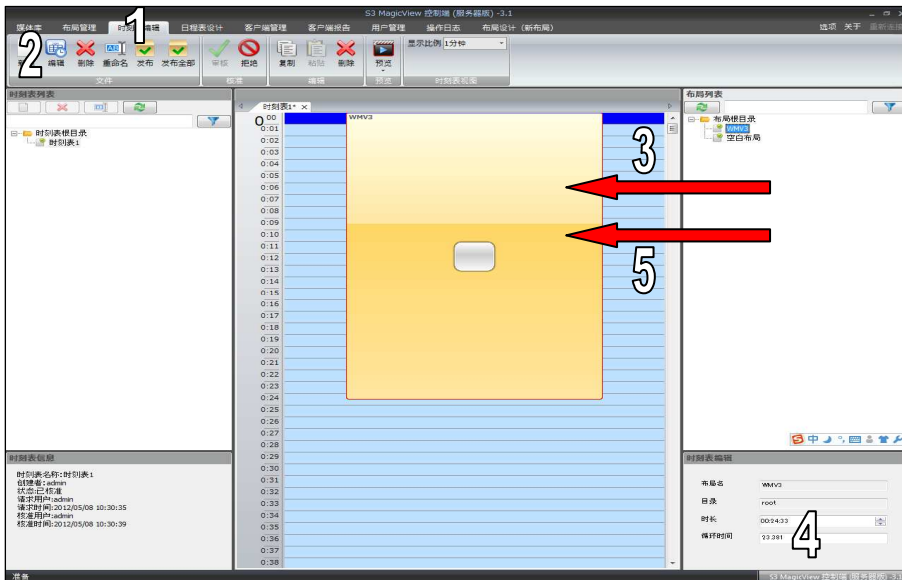
## Create Layouts

1. Click the **Layout Manager** tab.
2. Create a new Category1 in the **Layout Category Tree**.
3. Select **New** on the menu bar to open the **Designer** page.
4. Drag the multimedia content from the **Folders** window into the layout.
5. Edit the settings for the newly created layer.
6. Click the **Publish** menu button to upload the layout.



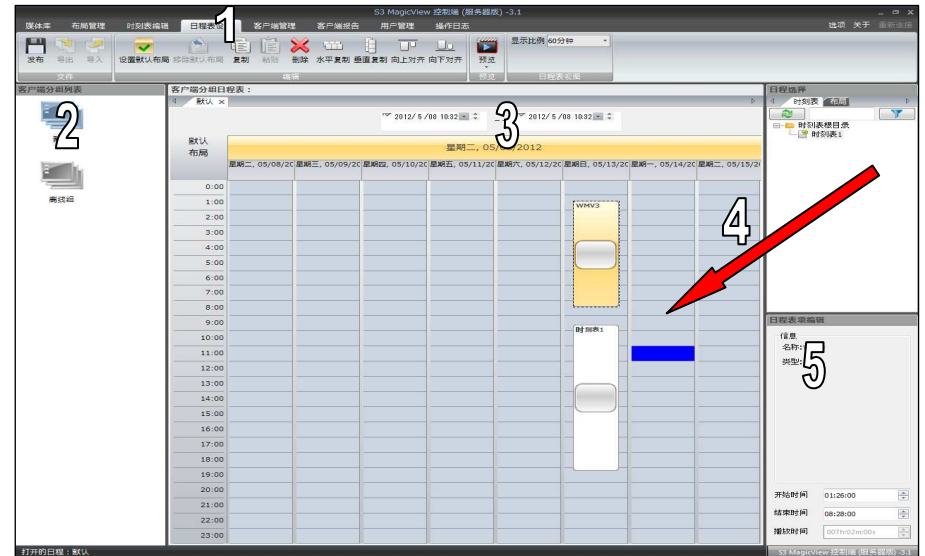
## Create Timetables

1. Click the **Timetable Designer** tab.
2. Select **Create** on the menu bar to setup a new timetable.
3. Drag Layout in the **Layout List** on the right side to the main window.
4. Set the duration and number of times to repeat this layout in the **Timetable Item Edit** window.
5. Repeat with additional layouts if desired.
6. Click the **Publish** button, input the name and save the timetable.



## Publish Schedules

1. Click the **Scheduler** tab.
2. Select the client group in **Client Group List** to edit.
3. Select the date for the schedule such as from July 26<sup>th</sup> to Aug 2<sup>nd</sup>.
4. Drag Timetable/Layout in the **Schedule Item Select** window to the main window.
5. Set the playing time of the Timetable/Layout in the **Schedule Item Edit** window.
6. Select **Publish** on the menu bar.



## Launch Client

Double-click **S3 MagicView Client** on the desktop of **Client Computer**.

The Client will download the schedule from S3 MagicView Controller and play the contents.