

All-in-One Digital Signage Kits

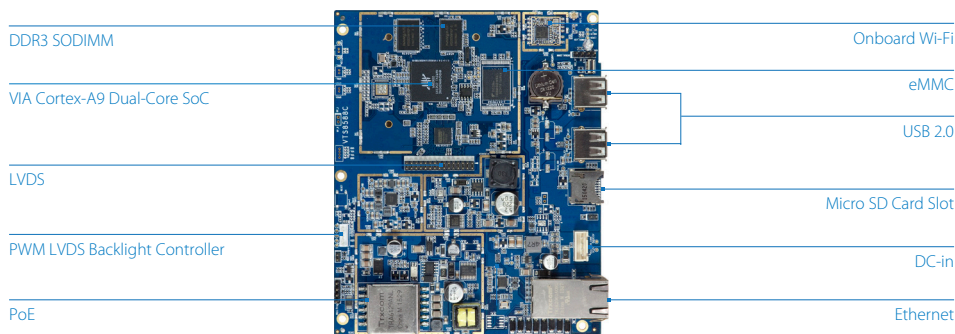
VIA VTS-8588

All-in-one panel display starter kit for HMI infotainment applications

Features

- 1.0GHz VIA Cortex-A9 dual-core SoC
- 10/100Mbps Ethernet with PoE support
- HTML5 Support
- Onboard Wi-Fi support
- Optional 17" panel for quick time to market designs

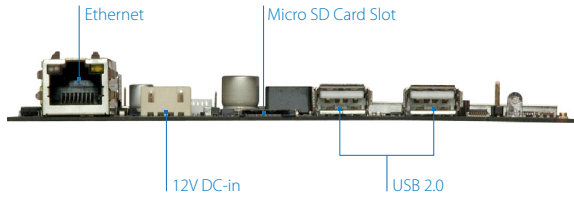
Board Placement



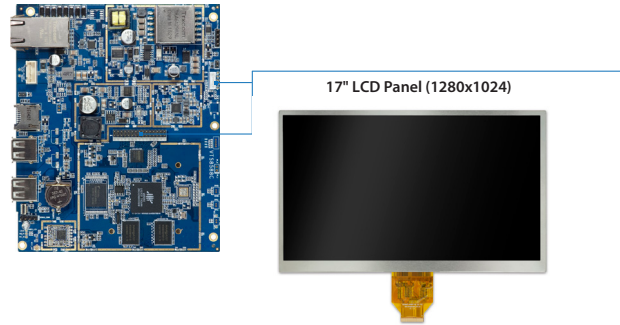
Specifications

VTS-8588	
Processor	1.0GHz VIA Cortex-A9 dual-core SoC
System Memory	1GB DDR3 SDRAM
Storage	8GB eMMC Flash memory
Boot Loader	512KB SPI Flash ROM
Graphics	Mali-400 dual processor GPU 2 integrated, independent 3D/2D graphics processing units Graphics engine supporting OpenGL® ES 2.0 hardware acceleration Supports MPEG-2 and H.264 video decoding up to 1080p
LAN	Realtek RTL8152B 10/100Mbps Ethernet controller
Wi-Fi	Realtek RTL8189ES SDIO onboard Wi-Fi module
Onboard I/O	1 Dual-channel LVDS connector 1 PWM LVDS backlight control connector 1 COM (TX/RX) Console connector 4 GPIO 1 DC-in connector
Rear I/O	2 USB 2.0 ports 1 10/100Mbps Ethernet port with 48V PoE 1 Micro SD card slot
Operating System	Linux kernel 3.4.5
Power Supply	12V DC-in
Operating Temperature	0°C ~ 45°C
Operating Humidity	0% ~ 90% (relative humidity; non-condensing)
Form Factor	14cm x 11.5cm (5.51" x 4.52")

Back Panel I/O



Accessories



Ordering Information

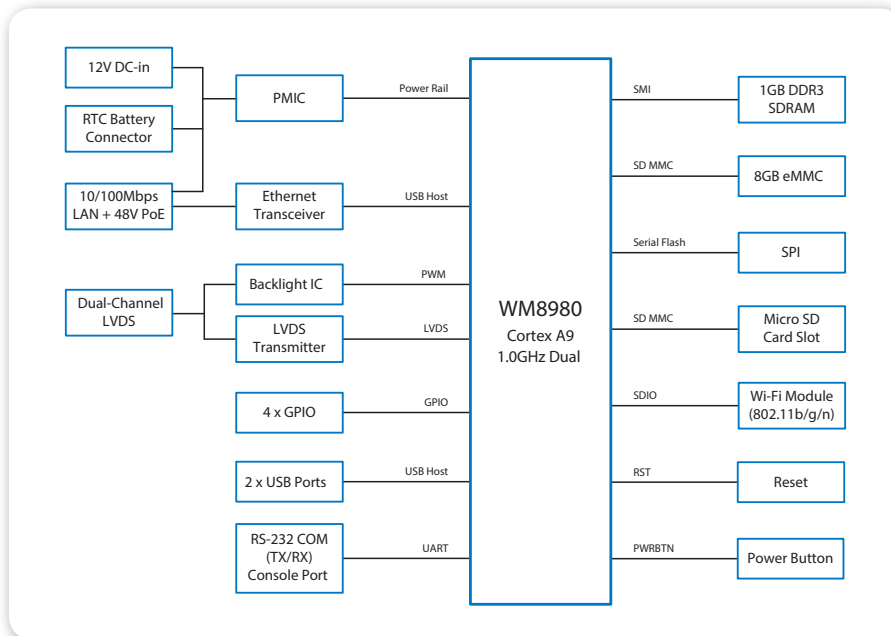
Part Number	CPU Frequency	Description
00GFJ10600020	VIA Cortex-A9 dual-core SoC @ 1.0GHz	VTS-8588 board with 1.0GHz VIA Cortex-A9 SoC, 8GB eMMC, 512KB SPI Flash ROM, 1GB DDR3 SDRAM, LVDS, 2 USB 2.0, 4 GPIO, 10/100Mbps Ethernet with PoE, onboard Wi-Fi, Micro SD card slot, 12V DC-in

Optional Accessories

LVDS LCD Panel

Part Number	Description
99G47-020501	17" LVDS LCD panel (1280x1024)

Block Diagram



Packing List

Items
VTS-8588 board
AC-to-DC power adapter
DC power cable
US plug
LVDS cable
Backlight cable