



VIA Intelligent Automotive Solutions

VIA Mobile360 HESS

Heavy Equipment Safety System



Prevent Pedestrian and
Vehicle Collisions



Reduce Equipment
Downtimes



Cut Operational
Disruptions and Costs



Ensure safety in the
Toughest Environments



Prevent accidents and save lives with VIA Mobile360 HESS. Built to excel in the most demanding environments, this tough and versatile system leverages its powerful 360-degree SVS (Surround View System) video and vSense™ smart sensor fusion technology combining camera detection with 77GHz mmWave radar to provide operators with real-time alerts of approaching vehicles, machinery, and workers in all weather, lighting, and working conditions.

Smart Sensor Fusion

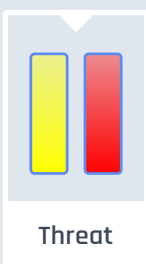
To ensure the accurate and timely detection of potential safety hazards in all weather, lighting, and operational conditions, VIA Mobile360 HESS features smart sensor fusion technology combining camera detection with mmWave radar. A single, unified interface on the in-cabin screen featuring real-time 360-degree SVS video makes it easy for operators to view alerts and see everything that is happening around their vehicle.

Smart Detection

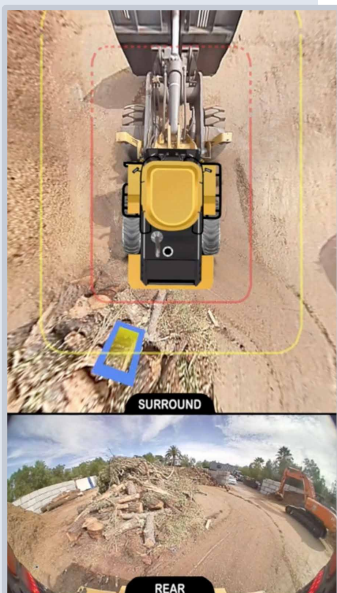
VIA Mobile360 HESS features two configurable Warning and Critical detection zones to notify operators of potential hazards from all angles of the vehicle. Whenever the system detects an object or a person in either detection zone, it displays a color-coded indicator on the operator's in-cabin screen. If it deems the object or person as a threat due to their trajectory, a blue box will flash around the color-coded indicator and the corresponding audio alert will also be played to alert the operator of the impending danger.



No Threat



Threat





Adaptive Sensing

With its unique Adaptive Sensing technology, VIA Mobile360 HESS further boosts the safety and maneuverability of even the largest vehicle by increasing blind spot coverage whenever it makes a sharp turn.



Reverse Gear

When the vehicle is reversing, all objects detected by the system's rear camera and radar are treated as threats regardless of their trajectories, enabling the operator to take extra care when carrying out this most collision-prone maneuver.

Ruggedized System



Designed to excel in the toughest environments, VIA Mobile360 HESS comprises a robust and reliable system with an IP67-rated ruggedized waterproof enclosure plus a wealth of ultra-reliable accessories, including:

- Up to eight IP69K-rated FOV-190° 720p automotive-grade cameras
- Up to eight IP69K-rated FOV-150° 77GHz mmWave radar sensors
- 8" industrial display (1280x720)
- High-quality speaker
- 4G LTE Module Kit for North America region
- Mountings and cables

Supported Vehicles



With its flexible design, VIA Mobile360 HESS can be installed on a wide variety of classes of heavy vehicles ranging from haulers, loaders, and bulldozers to concrete mixer trucks, lubrication trucks, and high-capacity forklifts. Specific models that the system has been installed on include:

- **Wheel Loaders:**
CAT 972M/Mxe, CAT 972H, CAT 980M, CAT 982M, and CAT 988K.
John Deere 724
- **Haulers:**
CAT 775F, CAT 775G, CAT 775F, CAT 777G, and CAT 938M.
Komatsu WA500-7
- **Telehandlers:**
Extreme XR1255

vCare™



VIA Mobile360 HESS comes with a full suite of vCare™ applications, services, and remote software updates that facilitate system deployment and maintenance and optimize system functionality and performance to meet specific usage requirements. Key features include:

- HESS Deployment Flow
- Asset Management
- Maintenance and RMA services
- POTA Software Upgrades
- System Health Analytics
- Real-time Uploading
- Vehicle Performance Analytics
- Vehicle Tracking
- Remote Diagnostics

Contact us to learn more about our comprehensive range of customization services for all classes of vehicles and usage scenarios.

